

BULOVA 1984



TRADITION CONTINUES

For nearly 11 decades, the phrase, "It's Bulova Watch Time," has been synonymous with watchmaking excellence and quality. From the oceans' depths to the moon, itself, America and the world have kept time with Bulova, making it the standard by which all others are judged.

Today, the tradition continues. Bulova is in the forefront, pioneering new timekeeping technologies and styling while still rigidly adhering to its commitment of quality, dependability and accuracy.

All the watches previewed in this 1984 catalog are a brilliant reflection of Bulova's superb craftsmanship. Bold, contemporary and beautiful, these watches are Bulova's finest. Plus, they are protected by a two-year warranty so they continue to perform to these highest of standards, year after year, and make what's right for today, perfect for tomorrow.

BULOVA

Neatly-styled and crisply-tailored for a man of distinction.



BULOVA CALENDAR

Precision and accuracy accented by handsome leather straps.



92B14

90B05

92B16

Superbly-crafted for split-second accuracy.

92B80



90B03



90B07



90B04



91B09



BULOVA CALENDAR

Precision timekeeping to keep pace with his achievements.



Bold. Contemporary. For the man who is a step ahead.



BULOVA CALENDAR
Tomorrow's timekeeping...today.



BULOVA DAY/DATE

Ruggedly-handsome with minute-a-year accuracy.

90C51



90C50



90C59



90C62



BULOVA DAY/DATE

Total timekeeping that's handsome and functional.



Hours, minutes, seconds, day and date...these watches do it all.



BULOVA DAY/DATE

Accuracy and precision that keep you up-to-the-minute every second of the day.



Handsome, compelling styling for the successful man.

92D04



92D05



92D02



92C49



BULOVA DIVER'S

On land or under the sea, it's Bulova...when every second counts.



BULOVA AUTOMATIC

For timekeeping traditionalists. The epitome of mechanized accuracy, precision and styling. It virtually winds itself.

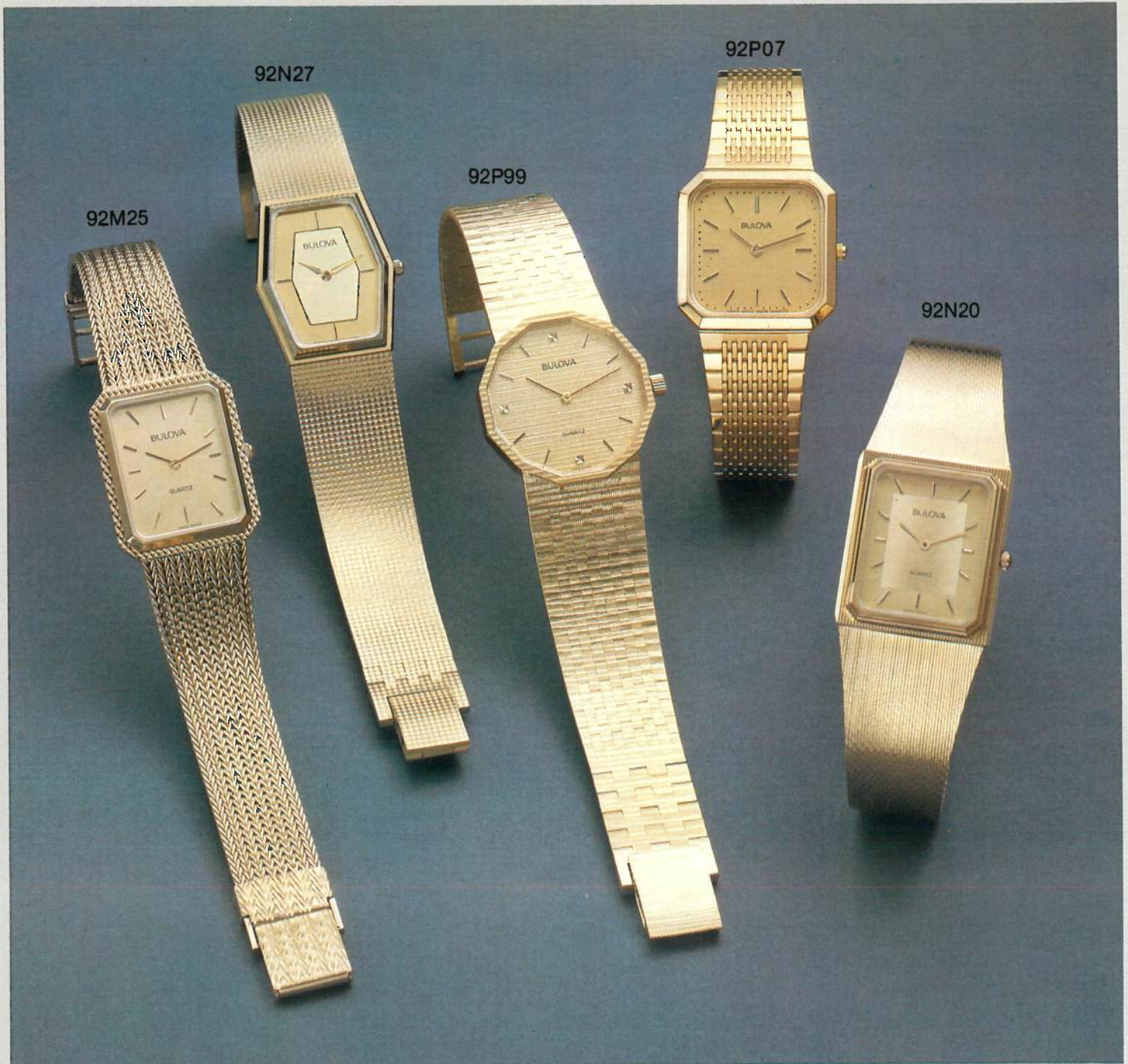


BULOVA DIAMOND DIAL
Elegance and excellence fired by sparkling gem stones.



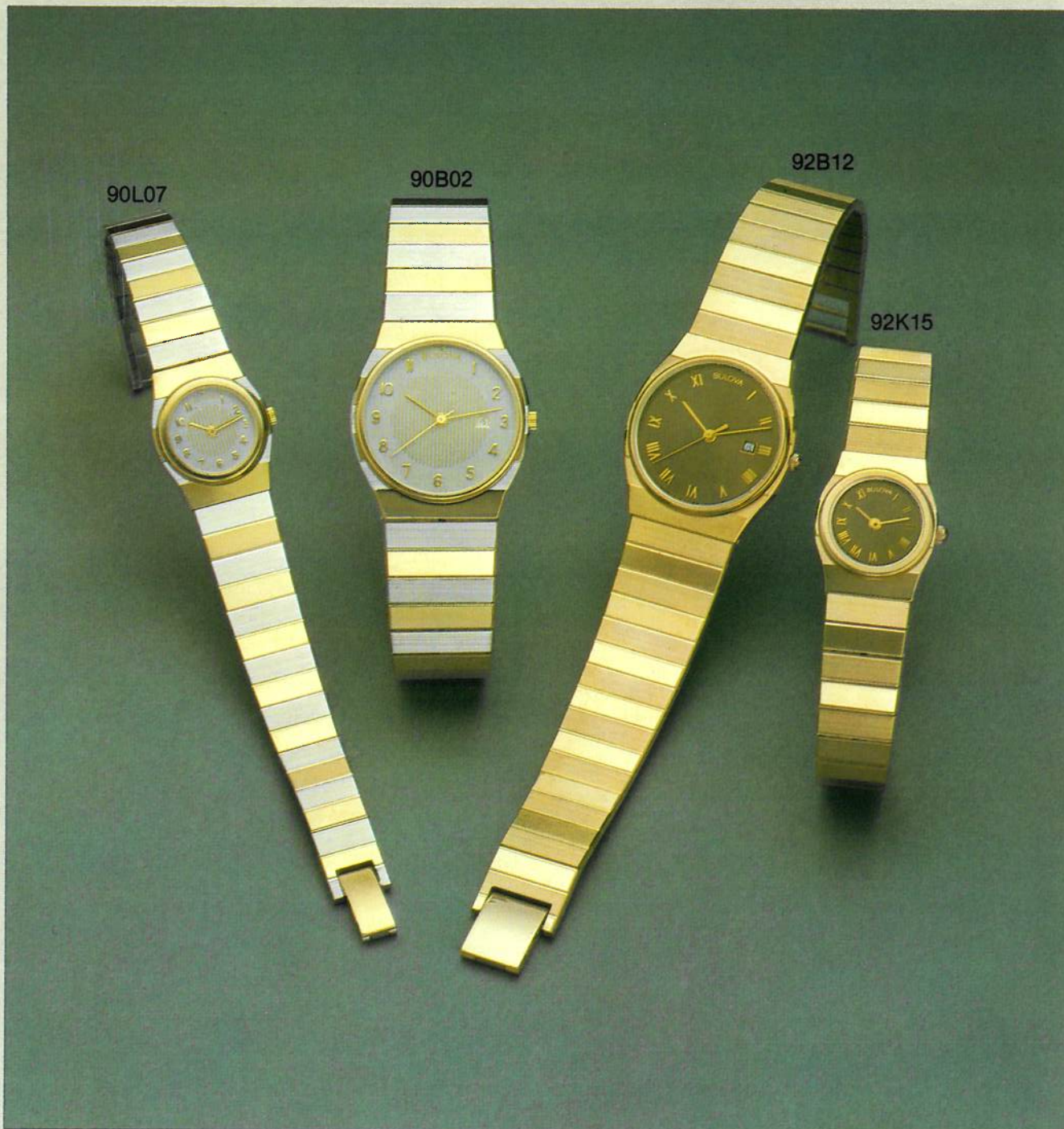
BULOVA

A glowing reflection of his achievements.



BULOVA DUETS

His and Her watchmates...trend-setting fashions
for the style-conscious couple.



BULOVA DUETS

The perfect way to stay in time with each other.



BULOVA DUETS

For him...for her. Identical in beauty, quality and accuracy.



BULOVA

Dynamic, contemporary styling for him and her.
The perfect way to stay on time at work or play.



BULOVA

Magnificent designs that are the epitome of dress watch elegance.

92M24



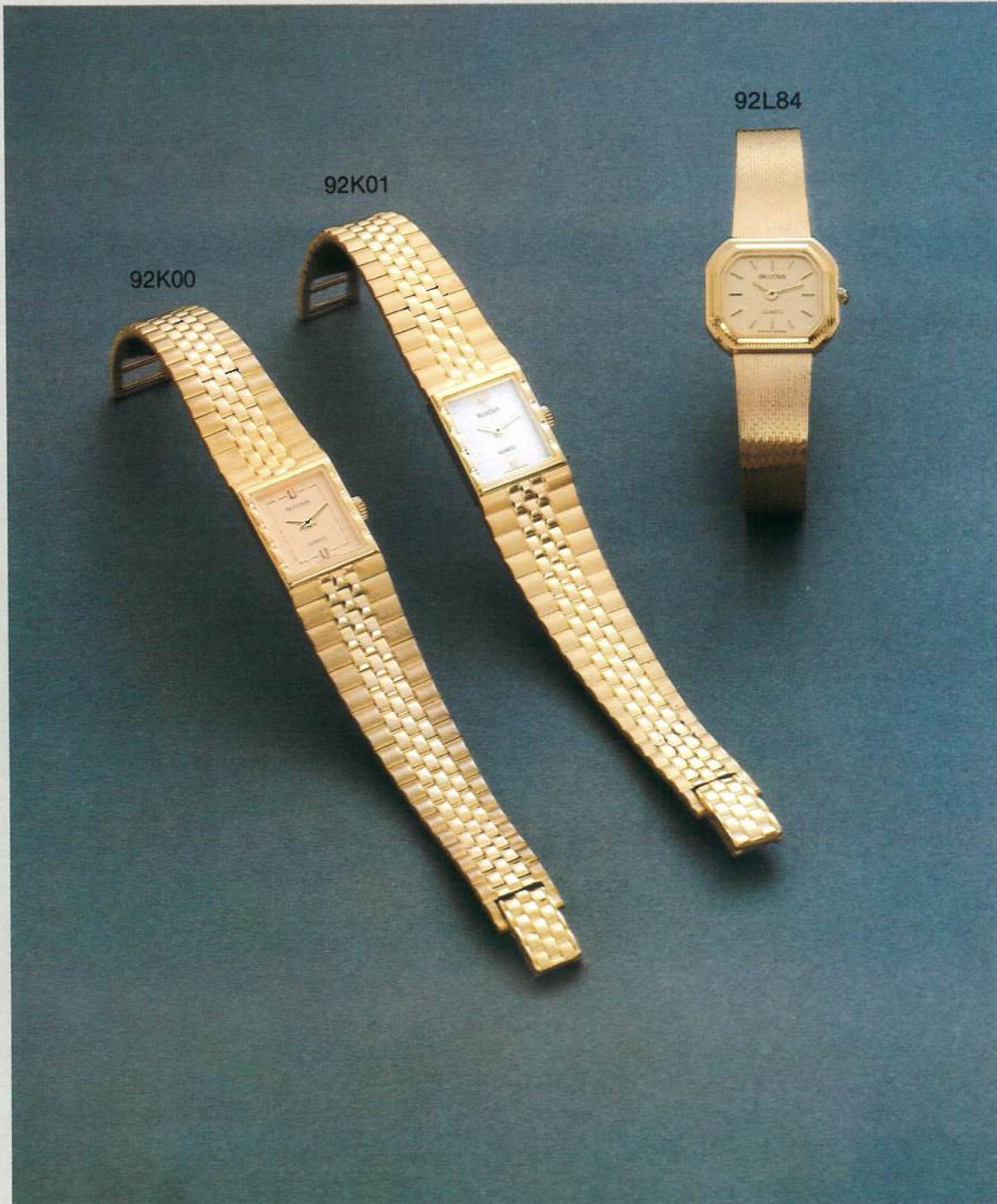
92M27



92M28



Spectacularly-appointed styles to flatter a lady's wrist.



BULOVA

Stunning designs that are perfect for any occasion.

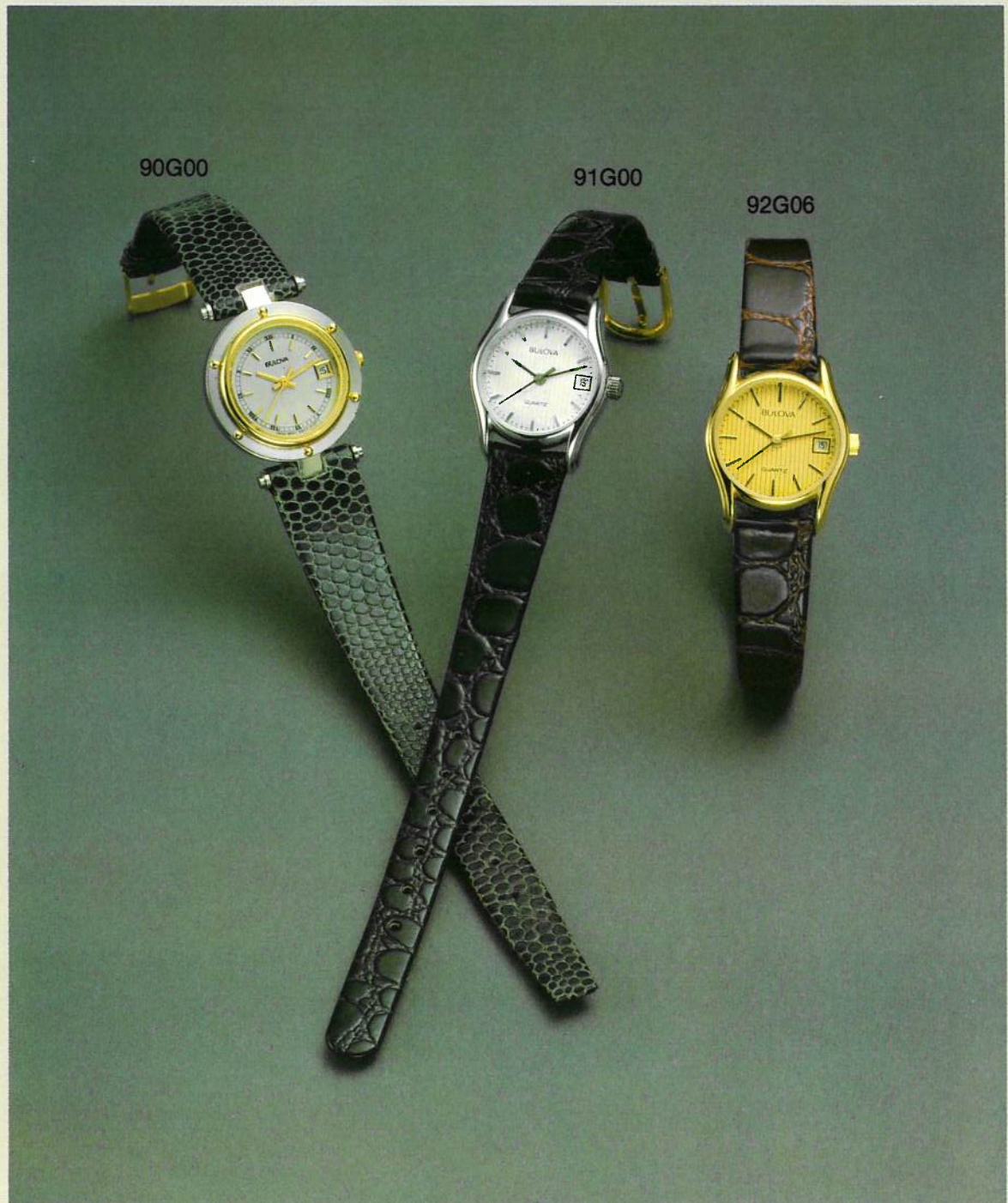


Distinctive dial treatments and sweep-second accuracy
keep the busy working woman on time, all the time.



BULOVA

Calendar displays and sweep-second accuracy
Keep her up-to-the-minute, every second of the day.



Bold, contemporary designs for today's active woman.



BULOVA

Jewelry for a lady's wrist that's beautiful...
and functional.



Simple, tasteful, elegant...and accurate.



BULOVA
GOLDEN ALLURE
COLLECTION

At home or on the town...a beautiful, timely accent
reflecting the thoroughly modern woman.



For business or pleasure, the elegant way to stay on time...
no matter what the time.



BULOVA
High-fashion styling with a touch of panache.

92K12



92K11



92T27



92K13



92K14

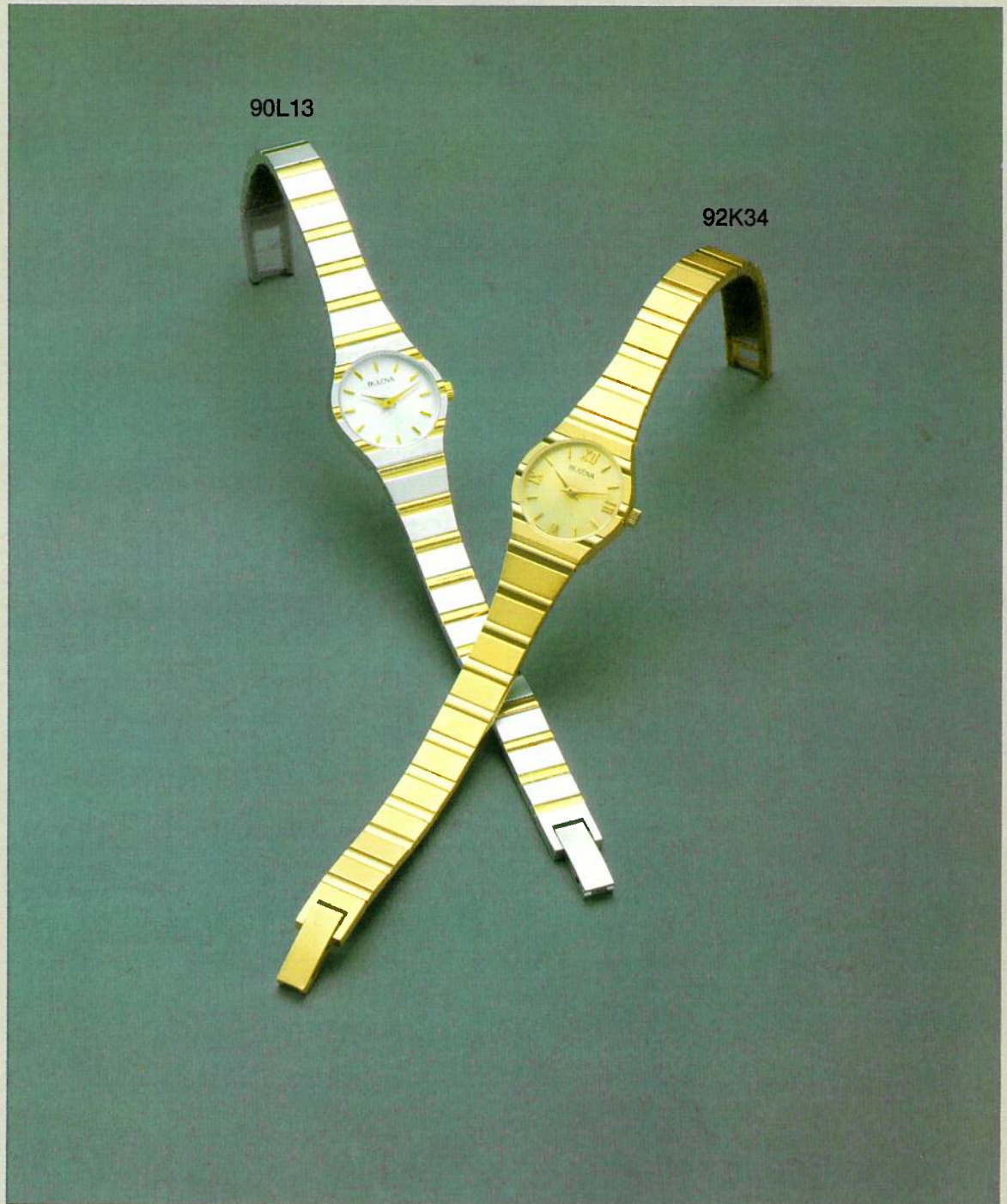


Exquisitely-styled cases and bracelets plus quartz timekeeping accuracy.



BULOVA

Beauty, grace, style...and accuracy.



Elegance with imaginative styling.

92K36



92L93



92H00



92L94



BULOVA

A timely expression of beauty, sophistication and elegance.



BULOVA DIAMOND DIAL

Stunning watches afire with the sparkle of fine diamonds.



The Romantics

What a lovely way to say, "I love you!"



BULOVA DIAMOND CARESSE®
What woman wouldn't want a Caresse?



For immediate action on orders
for merchandise in this catalog, call
between 9am and 5pm Eastern time.

**BULOVA HOTLINE
FOR ORDERS ONLY**
1-800-221-0734

In New York Call
1-212-565-4878



BULOVA WATCH COMPANY, INC.

A Subsidiary of Loews Corporation

Bulova Park, Flushing, New York 11370

PRINTED IN U.S.A.

1984 BULOVA PRICE LIST

JANUARY, 1984

COVER WATCHES: 92B12, 90B02, 90L07: See Page 18		
MODEL NO.	DESCRIPTION	PRICE
PAGE 3		
92A20	Goldtone case. Gilt florentine dial. Water resistant. Dura-Crystal®. Dark brown leather strap.	\$ 89.95
92A21	Goldtone case. Gilt brushed dial. Dura-Crystal. Dark brown leather strap.	\$110.00
92A22	Goldtone case. Gilt fleur d'eau dial. Dura-Crystal. Black leather strap.	\$125.00
91A03	Stainless steel case. Two-tone, silver sunbrushed dial. Water resistant to 3 atmospheres. Dura-Crystal. Black matte leather strap.	\$ 79.95
92A19	Goldtone case. Gilt dial. Dura-Crystal. Black leather strap.	\$150.00
PAGE 4		
92B16	Goldtone case. Two-tone gilt dial. Dura-Crystal. Dark brown leather strap.	\$150.00
92B14	Goldtone case. Gilt, stone-finish dial. Dura-Crystal. Brown leather strap.	\$ 99.95
90B05	Silvertone case with goldtone bezel. Two-tone, silver and white dial. Dura-Crystal. Brown leather strap.	\$ 89.95
PAGE 5		
91B09	All stainless steel. Silver-white radial dial. Water resistant. Dura-Crystal. Fold-over buckle.	\$ 84.95
90B03	Stainless steel case with goldtone bezel. Dark gilt-finish dial with silver minute track. Tritium indicators. Water resistant. Dura-Crystal. Two-tone, stainless steel bracelet. Hook-lock clasp.	\$110.00
92B80	Goldtone case with screw-down crown. Gilt sunray dial with magnified window on crystal. Water resistant. Fold-over buckle.	\$225.00
90B07	Stainless steel case with goldtone bezel. Gilt sunray dial with magnified window on crystal. Water resistant. Two-tone stainless steel bracelet with fold-over buckle.	\$195.00
90B04	Stainless steel case with goldtone bezel. Steel grey dial. Dura-Crystal. Two-tone stainless steel bracelet with hook-lock clasp.	\$165.00
PAGE 6		
92B13	Goldtone case. Cream dial. Water resistant. Dura-Crystal. Fold-over buckle.	\$ 99.95
92B24	Goldtone case. Silver dial. Dura-Crystal. Hook-lock clasp.	\$150.00
92B17	Goldtone case. Steel grey patterned dial. Dura-Crystal. Hook-lock clasp.	\$210.00
92B95	Same as 92B17 with two-tone gilt brushed dial.	\$210.00
92B15	Goldtone case. Gilt brushed radial dial. Water resistant to 3 atmospheres. Dura-Crystal. Hook-lock clasp.	\$125.00
PAGE 7		
92S75	Goldtone case with silvertone bezel. Silver grey dial. Dura-Crystal. Goldtone bracelet with silvertone connector links and hook-lock clasp.	\$235.00
90S75	Silvertone case with goldtone bezel. Two-tone silver sunray and pale gilt brushed dial. Dura-Crystal. Stainless steel bracelet with goldtone connector links and hook-lock clasp.	\$225.00
90B06	Stainless steel case with goldtone bezel. Two-tone, sunbrush silver grey and gilt dial. Water resistant to 3 atmospheres. Dura-Crystal. Two-tone stainless steel bracelet with fold-over buckle.	\$250.00
92S77	Goldtone case. Silver sunray dial. Dura-Crystal. Hook-lock clasp.	\$235.00

MODEL NO.	DESCRIPTION	PRICE
PAGE 8		
91B08	Stainless steel case with goldtone bezel. Gilt dial. Water resistant. Dura-Crystal. Two-tone stainless steel link bracelet with center catch.	\$265.00
91B05	Same as 91B08, with two-tone gilt and silver dial.	\$265.00
92B19	Goldtone case. Gilt stone-finish dial. Dura-Crystal. Center catch.	\$235.00
92B20	Goldtone case. Polished black dial with gilt Roman numerals. Dura-Crystal. Mesh bracelet with center catch.	\$275.00
PAGE 9		
90C51	Silvertone case with goldtone bezel and crown. Silver patterned dial. Dura-Crystal. Stainless steel link bracelet with hook-lock clasp.	\$125.00
90C50	Same as 90C51, with champagne textured dial.	\$125.00
90C59	Stainless steel case with goldtone bezel and silver screw heads. Light grey dial. Water resistant to 3 atmospheres. Dura-Crystal. Two-tone stainless steel bracelet with fold-over buckle.	\$165.00
90C62	Stainless steel case with goldtone bezel. Ivory dial. Water resistant. Dura-Crystal. Two-tone stainless steel bracelet with hook-lock clasp.	\$155.00
PAGE 10		
90C60	Stainless steel case with goldtone bezel. Two-tone black dial. Water resistant. Dura-Crystal. Stainless steel bracelet with goldtone links and center catch.	\$210.00
92C81	Goldtone case. Silver sunbrush dial. Dura-Crystal. Hook-lock clasp.	\$195.00
92C63	Goldtone case. Gilt dial. Water resistant. Dura-Crystal. Goldtone stainless steel bracelet with center catch.	\$225.00
PAGE 11		
92C42	Goldtone case. Gilt sunray dial. Water resistant to 3 atmospheres. Hook-lock clasp.	\$155.00
92C87	Goldtone case. Grey silk-sunray dial. Dura-Crystal. Hook-lock clasp.	\$135.00
92C45	Goldtone case. Gilt dial. Dura-Crystal. Hook-lock clasp.	\$185.00
PAGE 12		
92C86	Goldtone case. Ivory matte dial. Dura-Crystal. Hook-lock clasp.	\$135.00
92C40	Goldtone case. Silver dial. Water resistant to 3 atmospheres. Hook-lock clasp.	\$155.00
92C46	Goldtone case. Silver-white dial. Dura-Crystal. Hook-lock clasp.	\$185.00
PAGE 13		
92D04	Goldtone case. Champagne dial. Dura-Crystal. Fold-over buckle.	\$160.00
92D05	Same as 92D04, with reddish brown dial.	\$160.00
92D02	Goldtone case. Brown sunray dial. Water resistant to 3 atmospheres. Dura-Crystal. Hook-lock clasp.	\$165.00
92C49	Goldtone case. Black matte dial. Water resistant. Dura-Crystal. Fold-over buckle.	\$175.00
PAGE 14		
91C75	All stainless steel with screw back. One-way ratchet bezel. Black dial with luminous markers. Water resistant to 10 atmospheres (330 ft.). Fold-over buckle with safety hinge lock.	\$150.00
91C72	All stainless steel with screw back. One-way ratchet bezel, and screw down crown. Black matte dial with luminous markers. Water resistant to 20 atmospheres (660 ft.). Dura-Crystal. Fold-over buckle.	\$160.00

MODEL NO.	DESCRIPTION	PRICE
91C73	Same as 91C72, with black rubber diver's strap.	\$150.00
91B84	All stainless steel with screw back. One way ratchet bezel. Black dial with tritium indicators. Water resistant to 20 atmospheres (666 ft.). Dura-Crystal. Fold-over buckle.	\$135.00
PAGE 15		
12038	Automatic. Goldtone case with screw back. Pale champagne matte dial. Water resistant to 3 atmospheres. Dura-Crystal. Fold-over buckle.	\$140.00
11699	Automatic. All stainless steel with goldtone bezel. Grey dial. Water resistant to 3 atmospheres. Dura-Crystal. Fold-over buckle.	\$135.00
11701	Automatic. All stainless steel with screw back. Silver matte dial with tritium indicators. Water resistant to 3 atmospheres. Dura-Crystal. Hook-lock clasp.	\$ 99.95
12039	Same as 11701, in goldtone with black dial.	\$125.00
11700	Automatic. All stainless steel with screw back and one-way ratchet bezel. Black dial with luminous markers. Water resistant to 10 atmospheres (330 ft.). Fold-over buckle with safety clasp.	\$140.00
PAGE 16		
92M50	Goldtone case. Dark grey and gilt polished dial set with 2 diamonds. Dura-Crystal. Mesh bracelet with center catch.	\$275.00
92N10	Goldtone case. Black radial brushed dial set with one diamond. Dura-Crystal. Mesh bracelet with center catch.	\$195.00
92P50	Goldtone case. Two-tone black dial set with one diamond. Dura-Crystal. Hook-lock clasp.	\$175.00
92M26	Goldtone case. Grey brushed dial set with two diamonds. Dura-Crystal. Mesh bracelet with center catch.	\$295.00
92N25	Goldtone case. Black hob nail pattern dial set with 24 diamonds. Dura-Crystal. Mesh bracelet. Center catch.	\$495.00
PAGE 17		
92M25	Goldtone case. Gilt florentine finish dial. Dura-Crystal. Mesh bracelet with center catch.	\$275.00
92N27	Goldtone case. Two-tone gilt dial. Dura-Crystal. Mesh bracelet with center catch.	\$275.00
92P99	Goldtone case. Gilt textured dial. Center catch.	\$195.00
92P07	Goldtone case. Champagne stone-finish dial. Dura-Crystal. Hook-lock clasp.	\$150.00
92N20	Goldtone case. Two-tone gilt dial. Dura-Crystal. Mesh bracelet with center catch.	\$295.00
PAGE 18		
90L07	Goldtone and silvertone case and bracelet. Two-tone grey and gilt dial. Water resistant and Dura-Crystal. Center catch.	\$295.00
90B02	His: Watchmate to 90L07 with calendar display.	\$295.00
92B12	Goldtone case. Smoke grey sunbrushed dial. Water resistant. Dura-Crystal. Center catch.	\$295.00
92K15	Hers: Watchmate to 92B12 without calendar display.	\$295.00
PAGE 19		
92L66	Goldtone case. Silver sunray dial with gilt center ring. Dura-Crystal. Satin finish bracelet with center catch.	\$265.00
92N16	His: Watchmate to 92L66.	\$295.00
92L67	Same as 92L66, with gilt stone-finish dial.	\$265.00
92N17	His: Watchmate to 92L67.	\$295.00
PAGE 20		
92L61	Goldtone case with stone-set crown. Golden brown patterned dial. Dura-Crystal. Mesh bracelet with center catch.	\$210.00
92L60	Goldtone case with stone-set crown. Pale gilt dial. Dura-Crystal. Mesh bracelet with center catch.	\$210.00

MODEL NO.	DESCRIPTION	PRICE
PAGE 21		
90L05	Silvertone and goldtone case. Silver silk-tone dial. Dura-Crystal. Two-tone spiral mesh bracelet with center catch.	\$185.00
90L04	Silvertone and goldtone case. Gilt crystalline stone-finish dial. Dura-Crystal. Two-tone spiral mesh bracelet with center catch.	\$185.00
90B00	Silvertone and goldtone case with matching bracelet. Silver dial with calendar display. Dura-Crystal. Hook-lock clasp.	\$235.00
90B01	Same as 90B00, with gilt dial.	\$235.00
PAGE 22		
92M24	Goldtone case. Gilt dial. Dura-Crystal. Mesh bracelet with center catch.	\$275.00
92M27	Goldtone case and textured bezel. Gilt dial. Dura-Crystal. Center catch.	\$275.00
92M28	Same as 92M27, with black enamel dial set with one diamond.	\$325.00
PAGE 23		
92K00	Goldtone case and textured bezel. Gilt dial. Dura-Crystal. Center catch.	\$250.00
92K01	Goldtone case. Silver dial with gilt stripes. Dura-Crystal. Center catch.	\$250.00
PAGE 24		
92K22	Goldtone case. Pale gilt textured dial. Dura-Crystal. Burgundy leather strap.	\$115.00
90L14	Goldtone case with white, beaded bezel. Two-tone matte and enamel black dial. Dura-Crystal. Black leather strap.	\$125.00
92K37	Goldtone case. Two-tone gilt dial. Dura-Crystal. Brown leather strap.	\$130.00
92K23	Goldtone case. Brown sunray dial. Dura-Crystal. Dark brown leather strap.	\$135.00
92K24	Goldtone case. Gilt fleur d'eau dial. Dura-Crystal. Black leather strap.	\$125.00
PAGE 25		
90E01	Silvertone case with goldtone bezel. Gilt dial. Dura-Crystal. Black leather strap.	\$ 74.95
90E00	Silvertone case with goldtone bezel. Grey dial. Dura-Crystal. Black leather strap.	\$ 74.95
92E08	Goldtone case. Two-tone silver and white dial. Water resistant to 3 atmospheres. Dura-Crystal. Black leather strap.	\$130.00
92E07	Goldtone case. Gilt crystalline dial. Water resistant to 3 atmospheres. Dura-Crystal. Black leather strap.	\$130.00
PAGE 26		
90G00	Silvertone and goldtone case with six goldtone dots on bezel. Grey matte dial. Dura-Crystal. Dark grey leather strap.	\$ 99.95
91G00	Silvertone case. White patterned dial. Dura-Crystal. Black leather strap.	\$ 89.95
92G06	Goldtone case. Gilt patterned dial. Dura-Crystal. Brown leather strap.	\$ 99.95
PAGE 27		
91E97	Stainless steel case with goldtone bezel and screw down crown. Gilt dial with magnified window on crystal. Water resistant. Tritium indicators. Stainless steel bracelet with goldtone center links and fold-over buckle.	\$185.00
92E60	Same as 91E97, in goldtone.	\$195.00
92G05	Goldtone case. Brown sunray dial. Dura-Crystal. Hook-lock clasp.	\$125.00

MODEL NO.	DESCRIPTION	PRICE
90G02	Goldtone and silvertone case. Gilt linen dial. Dura-Crystal. Two-tone stainless steel bracelet with hook-lock clasp.	\$120.00
92G03	Goldtone case. Black matte dial. Water resistant to 3 atmospheres. Dura-Crystal. Fold-over buckle.	\$175.00
91E98	All stainless steel with goldtone screws on bezel and bracelet. Two-tone grey dial. Water resistant. Dura-Crystal. Fold-over buckle.	\$145.00
PAGE 28		
91L03	Silvertone case. Two-tone blue sunray and matte dial. Dura-Crystal. Stainless steel bracelet with center catch.	\$155.00
92L45	Goldtone case. Cream enamel dial. Patterned link bracelet with center catch.	\$105.00
91L02	Silvertone case. Silver and grey dial. Dura-Crystal. Stainless steel spiral wire mesh bracelet with center catch.	\$ 99.95
92L49	Goldtone case. White linen patterned dial. Diamond-cut design bracelet with center catch.	\$110.00
PAGE 29		
92K64	Goldtone case. Cream dial. Dura-Crystal. Mesh bracelet with center catch.	\$110.00
92K65	Same as 92K64, with champagne, full numeral dial.	\$110.00
92K66	Goldtone case. White satin-finish dial. Dura-Crystal. Textured mesh bracelet with center catch.	\$115.00
92K67	Same as 92K66, with gilt brushed radial dial.	\$115.00
PAGE 30-31		
BULOVA GOLDEN ALLURE COLLECTION Goldtone cases. Mesh bracelets with center catch.		
92L86	White dial.	\$140.00
92L91	Gilt brushed dial.	\$155.00
92L89	Light silver stone-finish dial.	\$150.00
92L87	Gilt brushed dial.	\$145.00
92L90	Gilt brushed dial.	\$150.00
92L85	Gilt silk-tone dial.	\$140.00
92L88	Golden brown dial.	\$145.00
92L92	Silver silk-patterned dial.	\$155.00
PAGE 32		
92K12	Goldtone case. Off-white matte dial. Dura-Crystal. Mesh bracelet with center catch.	\$160.00
92K11	Same as 92K12, with gilt matte dial.	\$160.00
92T27	Goldtone case. Cream dial. Dura-Crystal. Mesh bracelet with center catch.	\$195.00
92K13	Goldtone case. Champagne enamel dial. Dura-Crystal. Mesh bark-finish bracelet with center catch.	\$160.00
92K14	Same as 92K13, with two-tone light brown dial.	\$160.00
PAGE 33		
92K32	Goldtone case. Gilt woven pattern dial. Dura-Crystal. Mesh bracelet with center catch.	\$165.00
92K31	Same as 92K32, with cream enamel dial.	\$165.00
92K33	Goldtone case. Pale gilt textured dial. Dura-Crystal. Mesh bracelet with center catch.	\$165.00
92K35	Same as 92K33, with ivory enamel dial	\$165.00

MODEL NO.	DESCRIPTION	PRICE
PAGE 34		
90L13	Silvertone case with goldtone accents. Silver sunray dial. Dura-Crystal. Two-tone bracelet with center catch.	\$195.00
92K34	Same as 90L13, in brushed and polished goldtone with gilt sunray dial.	\$195.00
PAGE 35		
92K36	Goldtone case. Two-tone gilt crystalline dial. Dura-Crystal. Woven brick pattern mesh bracelet with center catch.	\$245.00
92L93	Goldtone case. Gilt florentine dial. Dura-Crystal. Mesh bracelet with center catch.	\$235.00
92L94	Goldtone case. Two-tone gilt dial. Dura-Crystal. Mesh bracelet with center catch.	\$265.00
PAGE 36		
92K21	Goldtone case. Gilt matte patterned dial. Dura-Crystal. Linear style bracelet with center catch.	\$235.00
92T28	Goldtone case. Black enamel dial. Dura-Crystal. Rib pattern bracelet with center catch.	\$210.00
92K25	Goldtone case. Gilt clou de paris, arch patterned dial. Dura-Crystal. Textured bracelet with center catch.	\$250.00
92K26	Goldtone case. Gilt sunray dial. Dura-Crystal. Linear design bracelet with center catch.	\$250.00
PAGE 37		
92K50	Goldtone case. Textured black enamel dial set with two diamonds. Dura-Crystal. Mesh bracelet with center catch.	\$295.00
92K55	Goldtone case. Gilt matte dial set with one diamond. Dura-Crystal. Mesh bracelet with center catch.	\$185.00
92K53	Goldtone case. Two-tone black dial set with one diamond. Dura-Crystal. Link bracelet with center catch.	\$225.00
90L02	Silvertone case. Grey linen dial set with one diamond. Bark-finish bracelet with center catch.	\$125.00
92K54	Goldtone case. Steel grey patterned dial set with one diamond. Dura-Crystal. Mesh bracelet with center catch.	\$185.00
PAGE 38 THE ROMANTICS		
92K59	Goldtone case. Silver sunray dial set with one diamond. Dura-Crystal. Woven mesh bracelet with center catch.	\$145.00
92K61	Goldtone case. Grey sunray dial set with one diamond. Dura-Crystal. Patterned mesh bracelet with center catch.	\$140.00
92K62	Goldtone case. Glossy black dial set with one diamond. Dura-Crystal. Textured mesh bracelet with center catch.	\$150.00
PAGE 39 DIAMOND CARESSE		
92L73	Goldtone case set with two diamonds. Silver satin dial. Mesh bracelet with center catch.	\$150.00
92L76	Goldtone case set with four diamonds. Gilt patterned dial. Bark-finished mesh bracelet with center catch.	\$170.00
92L77	Goldtone case set with six diamonds. Silver crystalline dial. Textured mesh bracelet with center catch.	\$190.00
92L78	Goldtone case set with eight diamonds. Gilt linen dial. Patterned mesh bracelet with center catch.	\$210.00

SOME THINGS YOU SHOULD KNOW ABOUT THE WATCHES IN THIS CATALOG

1. ALL WATCHES SHOWN ARE SHOCK RESISTANT and meet the U.S. Government standard to withstand shock equal to a drop of three feet to a hardwood surface without substantial adverse effect.

Ability to pass test assures that watch is protected against humid conditions and accidental immersion. Crystal, crown, and case must remain intact, so periodic checks are recommended.
2. All Bulova watches are Anti-Magnetic and meet the U.S. Government standard for exposure to a magnetic field of 60 GAUSS without substantial adverse effect.
3. All watches indicated as WATER-RESISTANT meet FTC standards of being capable at time of sale of enduring a test of submersion for five minutes under atmospheric pressure of 15 pounds per square inch and for five more minutes under additional pressure of 35 pounds per square inch without admitting any water.
4. BULOVA DURA-CRYSTAL® is a scratch-resistant mineral crystal offering maximum protection and distortion-free viewing.
5. All Day/Date models sold in U.S.A. have English/Spanish day discs. All Day/Date models sold in Canada have English/French day discs.
6. All Bulova watches are made with a stainless steel back.
7. All prices quoted are subject to change without notice.

Any watch in the catalog not listed on this sheet is no longer available.